

T/SP/SSW/22

Specification for
Safe working in the
vicinity of pipelines and
associated installations
operating above 2 Barg
– requirements for
third parties
April 2026



WALES&WEST
UTILITIES

Contents

Foreword	3	8 Construction traffic	17
Brief history	4	9 Specific activities	18
Key changes	4	9.1 No-dig techniques	18
Use	5	9.2 Increase in cover	18
Mandatory and non-mandatory requirements	5	9.3 Piling	18
Endnote	5	9.4 Demolition	18
1 Introduction	6	9.5 Blasting	19
Document flowchart	7	9.6 Surface mineral extraction	19
2 Scope	8	9.7 Deep mining	20
3 Formal consent	9	9.8 Landfilling	20
3.1 Within an easement	9	9.9 Pressure testing	20
3.2 Within the highway	9	9.10 Seismic surveys	20
3.3 Within the area of interest	10	9.11 Hot work	20
4 HS&E considerations	11	9.12 Wind turbines	20
4.1 Safe control of operations	11	9.13 Solar farms	21
4.2 Deep excavations	11	9.14 Tree planting	21
4.3 Positioning of plant	11	10 Backfilling	22
4.4 General	11	11 Action in the case of damage to the pipeline	23
5 Pipeline locating	12	12 References	24
6 Slabbing and other protective measures	13	13 Glossary of terms	24
7 Excavation	14	Appendix A	25
7.1 In proximity to a pipeline in an easement	14		
7.2 In proximity to a pipeline in the highway	14		
7.3 Crossing over a pipeline	15		
7.4 Crossing below a pipeline	15		
7.5 Cathodic protection	16		

Foreword

This specification was approved by Business Performance Delivery Committee (BPDC) at their meeting held on 25 March 2026 for use by managers, engineers and supervisors throughout Wales & West Utilities Limited.

Documents are revised, when necessary, by the issue of new editions. Users should ensure that they are in possession of the latest edition by referring to the document library available on the WWU website or by contacting the Plant Protection team on 02920 278912.

Compliance with this document does not confer immunity from prosecution for breach of statutory or other legal obligations.



Brief history

First published as T/SP/SSW22	October 2001	EPSG/L01/283
Editorial update to reflect merger	October 2002	
Revised and reissued	November 2002	
Revised and reissued as T/SP/SSW/22	November 2003	EPSG/A03/10125
Editorial update to comply with GRM	June 2004	EPSG/T04/1209
	August 2004	
Document revised to remove reference to Transco and replace with Wales & West Utilities Ltd.	May 2006	
Document revised to reflect Wales & West Utilities management structure, include IP pipelines and update letters.	June 2013	
Document revised and reissued to include references to industry guidance.	April 2026	

Key changes

Identify the changes from the previous version of this document.

Section	Amendments
9	References added to wind turbine and solar farm developments near pipelines



Use

This document is provided by Wales & West Utilities Limited for information and reference.

Mandatory and non-mandatory requirements

In this document:

- Must:** Indicates a mandatory requirement prescribed in law.
- Shall:** Prescribes a Wales & West Utilities requirement that it is intended will be complied with in full and without deviation.
- Should:** Prescribes a Wales & West Utilities requirement that it is intended will be complied with unless, after prior consideration (documented by WWU under its T/PM/GR/7 process), a deviation is acceptable.

Endnote

Comments

Comments and queries regarding the technical content of this document should be directed to:

Asset Integrity
 Wales & West Utilities Ltd.
 Wales & West House
 Spooner Close
 Coedkernew
 Newport
 NP10 8FZ

Buying documents

Contractors and other external users should direct their requests for further copies of Wales & West Utilities documents to the department or group responsible for the initial issue of their contract documentation.

© Wales & West Utilities Ltd.

This document is copyright and must not be reproduced in whole or in part by any means without the approval in writing of Wales & West Utilities Ltd.

Specification for Safe working in the vicinity of pipelines and associated installations operating above 2 Barg – requirements for third parties

1 Introduction

This specification is for issue to third parties carrying out work in the vicinity of high-pressure (above 7 bar) and intermediate pressure (2-7 bar gauge) gas pipelines and associated installations and is provided to ensure that individuals planning and undertaking work take appropriate measures to prevent damage.

Any damage to a gas pipeline or its coating can affect its integrity and can result in failure of the pipeline with potential serious hazardous consequences for individuals located in the vicinity of the pipeline if it were to fail at the time, or at a later date. It is therefore essential that the procedures outlined in this document are complied with in full when working near to high-pressure and intermediate pressure pipelines and associated installations. If any work is considered by Wales & West Utilities to be in breach of the requirements stipulated in this document, then the Wales & West Utilities responsible person will suspend the work until the non-compliances have been rectified.

The Pipelines Safety Regulations state that **“No person shall cause such damage to a pipeline as may give rise to a danger to persons”** (Regulation 15). Failing to comply with these requirements could therefore also result in prosecution by the Health and Safety Executive (HSE).

The requirements in this document are in line with the requirements of the IGEM (the Institution of Gas Engineers and Managers) standard IGEM/SR/18 – *Safe working practices to ensure the integrity of gas pipelines and associated installations*, and the HSE’s guidance document HSG47 *Avoiding danger from underground services* (Available to download for free from www.hse.gov.uk).

It is the responsibility of the third party and any associated contractors working on the project to ensure that all work complies with all Health & Safety legislation, including the CDM regulations.

Document flowchart

When carrying out work in the vicinity of a high/intermediate pressure pipeline follow the following process:

Contact Wales & West Utilities

Contact Wales & West Utilities to obtain formal consent – Section 2 of this document.

Note: At least 10 days' notice prior to commencement of the work is normally required.

Consider safety

Consider the safety requirements – Section 3 of this document.

Inform Wales & West Utilities and request pipeline location

Inform Wales & West Utilities prior to carrying out work and arrange for Wales & West Utilities to locate the pipeline – Section 4 of this document.

Note: At least 10 days' notice is normally required.

Observe restrictions

Observe Wales & West Utilities' restrictions on the allowed proximity of mechanical excavators and other power tools and the measures to protect the pipeline from construction vehicles when carrying out the work – Sections 5, 6 and 7 of this document.

Note: Wales & West Utilities may wish to supervise the work; consult Wales & West Utilities to confirm whether or not this is the case.

Specific activities

If work involves any of the following activities:

- | | | |
|---------------------|------------------------------|--------------------|
| • no-dig techniques | • blasting | • pressure testing |
| • increase in cover | • surface mineral extraction | • seismic surveys |
| • piling | • deep mining | • wind turbines |
| • demolition | • landfilling | • solar farms |
| • hot work | | |

comply with the requirements in Section 9 of this document.

Consult Wales & West Utilities

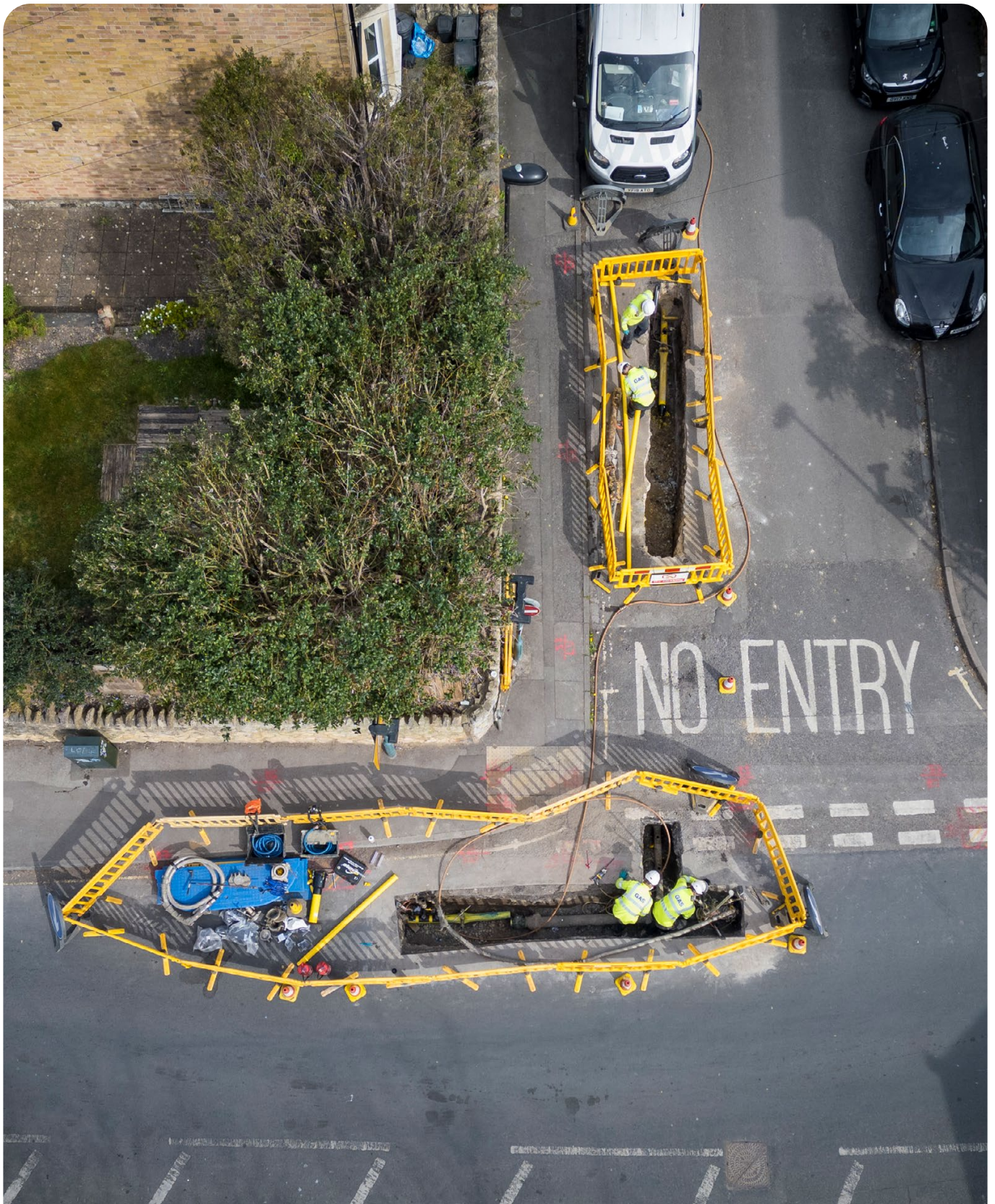
Consult Wales & West Utilities prior to any backfilling over, alongside or under the pipeline and obtain Wales & West Utilities agreement to proceed. Normally Wales & West Utilities requires 48 hours' notice prior to backfilling – Section 10 of this document.

Important: This flowchart should be used in conjunction with the entire SSW22 document and not in isolation, **and** if, at any time during the works, the pipeline is damaged, even slightly, then observe the precautions in Section 11 of this document.

If in doubt contact Wales & West Utilities on 02920 278912.

2 Scope

This specification sets out the safety precautions and other conditions affecting the design, construction and maintenance of services, structures and other works in the vicinity of Wales & West Utilities pipelines and associated installations operating at pressures greater than 2 bar gauge, located in both negotiated easements (see Section 13), in public highways and within the wider area of interest around a pipeline.



3 Formal consent

High and intermediate pressure pipelines are generally laid across country within an easement agreed with the landowner or within the highway. It should be noted that there may be buried cabling associated with a cathodic protection system in the vicinity of any pipeline that is critical to the long-term integrity of the pipeline.

As the required arrangements for working within an easement and working within the highway differ, this document has been structured to highlight the specific requirements for these two types of area where work may be carried out.

Generally, normal agricultural activities are not considered to affect the integrity of the pipeline. However, consult Wales & West Utilities prior to undertaking deep cultivation in excess of 0.5m, or, in the event that you have been notified that the pipeline is shallow, please consult Wales & West Utilities in all instances.

In all other cases no work shall be undertaken in the vicinity of the pipeline without the formal written consent of Wales & West Utilities.

Any documents handed to contractors on site by Wales & West Utilities must be signed for by the site manager. Wales & West Utilities will record a list of these documents using the form in Appendix A, and the contractor should maintain a duplicate list.

3.1 Within an easement

The promoter of any works (see Section 12) within an easement must provide Wales & West Utilities with details of the proposed works, including a method statement of how the work is intended to be carried out.

Work must not go ahead until formal written consent has been given by Wales & West Utilities. This will include details of Wales & West Utilities' protection requirements, contact telephone numbers and the emergency telephone number.

On acceptance of Wales & West Utilities' requirements, the promoter of the works should give Wales & West Utilities 10 working days' notice, or shorter only if agreed with Wales & West Utilities, before commencing work on site.

3.2 Within the highway

Work must be notified to Wales & West Utilities in accordance with the requirements of the New Roads and Street Works Act 1991 (NRSWA) and HSG47.

The promoter of any works within the highway should provide Wales & West Utilities with details of the proposed works including a method statement of how the work is intended to be carried out. This should be

submitted 10 working days before the planned work is to be carried out or shorter, only if agreed with Wales & West Utilities. If similar works are being carried out at a number of locations in close proximity, a single method statement may be adequate.

Work should not go ahead until formal written consent has been given by Wales & West Utilities. This will include details of Wales & West Utilities' protection requirements, contact telephone numbers and the emergency telephone number.

3.3 Within the area of interest

Certain other activities, such as the development of adjacent land with buildings, or other constructions which may have an impact on the safe operation of above 2 bar gauge pipelines, must also be notified to Wales & West Utilities, for example the construction of wind turbines, masts, aerials or solar farms.

Developers should ensure early consultation with Wales & West Utilities in respect of such development, rather than relying on local authority planning consultation, which may lead to substantial late changes to design or constraints on the planned development. Receipt of a planning approval from the local authority does not constitute approval by Wales & West Utilities that the work can progress.



4 HS&E considerations

4.1 Safe control of operations

All working practices must be agreed by Wales & West Utilities prior to work commencing. All personnel working on site must be made aware of the potential hazard of the pipeline and the actions they should follow in case of an emergency. The Site Document Control Form (Appendix A) should be used to record the list of relevant documents that have been provided by Wales & West Utilities to the contractor.

4.2 Deep excavations

Special consideration should be given to the hazards associated with deep excavations. Further guidance is available on the HSE website www.hse.gov.uk

4.3 Positioning of plant

Mechanical excavators must not be sited or moved above the pipeline unless written authority has been given by the Wales & West Utilities responsible person.

Mechanical excavators must not dig on one side of the pipeline with the cab of the excavator positioned on the other side.

Mechanical excavators and other traffic must be positioned far enough away from the pipeline trench to prevent trench wall collapse.

4.4 General

Activities associated with working in the vicinity of pipelines operating above 2 bar gauge may have an impact on the safety of the general public, Wales & West Utilities staff and contractors, and may affect the local environment. Contractors must carry out suitable and adequate risk assessments prior to the commencement of work to ensure that all such issues are properly considered and risks mitigated.



5 Pipeline locating

The third party should give 10 working days' notice (or shorter as agreed with Wales & West Utilities) to ensure that the pipeline is suitably located and marked out by Wales & West Utilities prior to the work commencing.

Prior to work commencing on site the pipeline must be located and pegged or suitably marked out by Wales & West Utilities personnel. In exceptional circumstances, with the prior agreement of Wales & West Utilities, the locating and marking out of the pipeline may be carried out by competent third parties on behalf of the contractor as long as Wales & West Utilities has been assured of their competence and the procedures to be followed in advance.

Safe digging practices, in accordance with HSE publication HSG47, should be followed as both direct and consequential damage to gas plant can be dangerous both to employees and to the general public.

Previously agreed working practices should be reviewed and revised based on current site conditions. Any changes must be agreed by the Wales & West Utilities responsible person.

The requirements for trial holes to locate the pipeline or determine levels at crossing points must be determined on site by the Wales & West Utilities responsible person.

The excavation of all trial holes must be supervised by the Wales & West Utilities responsible person.



6 Slabbing and other protective measures

No protective measures, including the installation of concrete slab protection, should be installed over or near to a Wales & West Utilities pipeline without the prior permission of Wales & West Utilities. Wales & West Utilities will need to agree the material, the dimensions and method of installation of any proposed protective measure. The method of installation must be confirmed through the submission of a formal written method statement from the contractor to Wales & West Utilities.

Where permanent slab protection is to be applied over the pipeline Wales & West Utilities should carry out a coating survey of the pipeline to check that there is no existing damage to the coating of the pipeline prior to the slab protection being put in place. In addition, the pipeline records should be consulted to determine whether any other investigations or remedial works would be needed in advance of the slab construction, e.g. reference to T/PM/P/18 – Working on Pipelines Containing Defective Girth Welds or Girth Welds of Unknown Quality. Wales & West Utilities shall therefore be contacted prior to the laying of any slab protection to arrange this survey. The safety precautions detailed in Sections 3 and 6 of this document should also be observed during the installation of the pipeline protection.



7 Excavation

7.1 In proximity to a pipeline in an easement

Third parties must not excavate unsupervised with a powered mechanical excavator closer than 3 metres to the Wales & West Utilities located pipeline or with hand-held power tools closer than 1.5 metres. Any fitting, attachment or connecting pipework on the pipeline must be exposed by hand. All other excavation must be by hand.

Consideration may be given to a relaxation of these limits by agreement with the Wales & West Utilities responsible person on site and only whilst they remain on site. In this case, a powered mechanical excavator must not be allowed to excavate closer than 0.6 metres to the nearest part of the pipeline.

Where sufficient depth of cover exists, following evidence from hand dug trial holes, light tracked vehicles may be permitted to strip topsoil to a depth of 0.25 metres, using a toothless bucket.

No topsoil or other materials should be stored within the easement without the written permission of Wales & West Utilities.

No topsoil or materials should be stored over the pipeline.

Consideration shall be given to the storage of topsoil or other materials outside of the easement strip, within close proximity to the pipeline, to reduce the possibility of axial loading.

No fires should be allowed in the easement strip or close to above ground gas installations.

After completion of the work, the level of cover over the pipeline should be the same as that prior to work commencing unless agreed otherwise with the Wales & West Utilities responsible person.

No new buried infrastructure shall be laid parallel to the pipeline within the easement. In special circumstances, and only with formal written agreement from Wales & West Utilities, this may be relaxed for short excursions where the service shall be laid no closer than 600 mm to the side of the pipeline.

Where work is being carried out parallel to the pipeline within, or just alongside, the easement, a post and wire fence must be erected as a protective barrier between the works and the pipeline.

7.2 In proximity to a pipeline in the highway

Removal of the bituminous or concrete highway surface layer by mechanical means is permitted to a depth of 300 mm, although the use of chain trenchers to do this shall not be permitted within 3 metres of the pipeline. The Wales & West Utilities responsible person may want to monitor this work.

Where the bituminous or concrete highway surface layer extends below 0.3 metres deep it should only be removed by hand-held, power assisted tools under the supervision of the Wales & West Utilities responsible person.

In exceptional circumstances, and following a risk assessment, these conditions may be relaxed by the Wales & West Utilities responsible person.

Third parties should not excavate, unsupervised, with a powered mechanical excavator closer than 3 metres to the located Wales & West Utilities pipeline or with hand-held power tools closer than 1.5 metres. Any fitting or attachment must be exposed by hand.

In special circumstances consideration may be given to a relaxation of these rules by agreement with the Wales & West Utilities responsible person on site and only whilst they supervise this work.

The use of “no dig” techniques is covered in Section 9.1.

Any new service running parallel to the pipeline should be laid no closer than 600 mm to the pipeline (see Section 7.4).

7.3 Crossing over a pipeline

Where new buried infrastructure is to cross over the pipeline a clearance distance of 600 mm between the crown of the pipeline and underside of the service must be maintained. If this cannot be achieved the buried infrastructure must cross below the pipeline with a clearance distance of 600 mm. Crossings must be completed as close to 90 degrees as possible.

In special circumstances this distance may be reduced at the discretion of the Wales & West Utilities responsible person on site.

7.4 Crossing below a pipeline

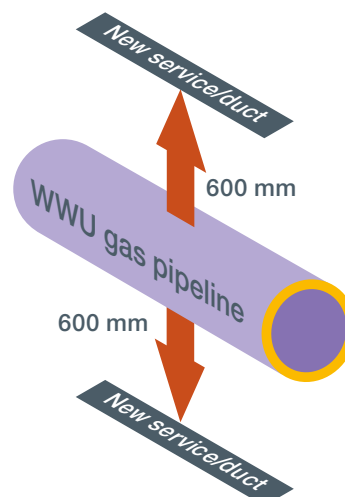
Where buried infrastructure is to cross below the pipeline a clearance distance of 600 mm between the crown of the service and underside of the pipeline should be maintained. Crossings must be completed as close to 90 degrees as possible.

The exposed pipeline must be suitably supported. The Wales & West Utilities responsible person must be consulted and a stress analysis may be required in order to establish support requirements. The stress analysis should be carried out by individuals with demonstrated expertise in this area; Wales & West Utilities can be consulted for advice on suitable specialists. Wales & West Utilities may request a copy of the stress analysis to confirm its adequacy.

Specific additional constraints apply to Wales & West Utilities pipelines that fall under the requirements of T/PM/P/18.

All supports must be removed prior to backfilling.

The exposed pipelines must be protected by matting and suitable timber cladding.



7.5 Cathodic protection

Cathodic protection (CP) is applied to all of Wales & West Utilities' above 2 bar gauge buried steel pipelines and is a method of protecting pipelines with damaged coatings from corrosion by maintaining an electrical potential difference between the pipeline and anodes placed at strategic points along the pipeline. Electrical infrastructure and unprotected buried metallic objects and structure can reduce the effectiveness of the CP system.

Cabling associated with the CP system may run some distance from the pipeline to a test post or other apparatus. Care must be taken to avoid damage to this cabling and advice sought from Wales & West Utilities where encountered.

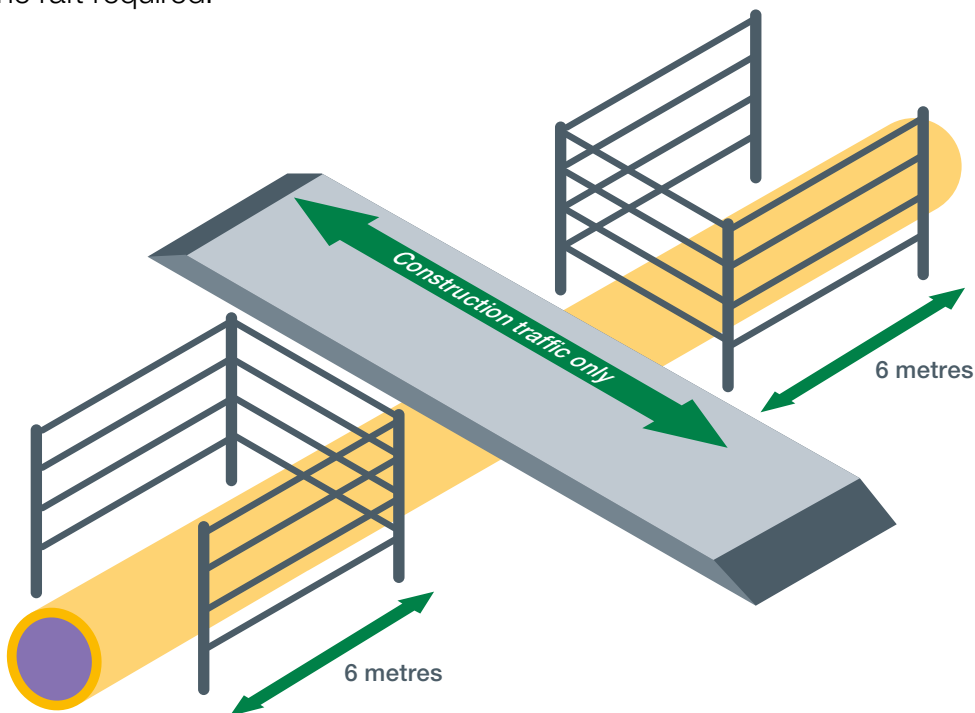
Where a new service is to be laid and similarly protected, Wales & West Utilities will undertake interference tests to determine whether the new service is interfering with the cathodic protection of the Wales & West Utilities pipeline.

Should any CP test posts or associated apparatus need moving to facilitate third-party works, reasonable notice, typically 10 days, should be given to Wales & West Utilities. Wales & West Utilities will undertake this work and any associated costs will be borne by the third party.



8 Construction traffic

Where existing roads cannot be used, construction traffic should ONLY cross the pipeline at previously agreed locations. All crossing points will be fenced on both sides with a post and wire fence and with the fence returned along the easement for a distance of 6 metres. The pipeline shall be protected at the crossing points by temporary rafts of either sleeper or reinforced concrete construction, constructed at ground level. The Wales & West Utilities responsible person will review ground conditions, vehicle types and crossing frequencies to determine the type and construction of the raft required.



9 Specific activities

This section details the precautions that need to be taken when carrying out certain prescribed activities in the vicinity of the pipeline. Consult Wales & West Utilities if you are intending to undertake one of the listed prescribed activities and/or you require further advice on whether the work that you are intending to undertake has the potential to affect the pipeline.

9.1 No-dig techniques

Where the contractor intends using no-dig techniques, such as vacuum excavation, then a formal method statement must be produced for all work that would encroach (either above or below ground) within the pipeline easement. This method statement must be formally agreed with Wales & West Utilities prior to the commencement of the work. Wales & West Utilities may wish to be present when the work is being carried out and must therefore be given adequate advance notice before commencement of the work.

9.2 Increase in cover

A pipeline integrity assessment shall be provided for situations involving a final cover depth exceeding 2.5 metres. This assessment should take due account of both soil “dead” loading and ground settlement due to earthworks. Embankment design and construction over pipelines shall give consideration to prevention of any instability. Expert advice may need to be sought which can be arranged through Wales & West Utilities.

9.3 Piling

No piling will be allowed within 15 metres of a pipeline without an assessment of the vibration levels at the pipeline. The peak particle velocity at the pipeline should be limited to a maximum level of 75 mm/sec. In any event the ground vibration shall be monitored by the contractor and the results made available to the Wales & West Utilities responsible person at their request. A typical monitoring device would be the Vibrock V901 seismograph and tri-axial geophone sensor.

Where ground conditions are of submerged granular deposits of silt and sand, an assessment of the effect of vibration on settlement and liquefaction at the pipeline shall be made.

Expert advice may need to be sought which can be arranged through Wales & West Utilities.

9.4 Demolition

No demolition will be allowed within 150 metres of a pipeline without an assessment of the vibration levels at the pipeline. The peak particle velocity at the pipeline must be limited to a maximum level of 75 mm/sec. In any event, the ground vibration shall be monitored by the contractor

and the results made available to the Wales & West Utilities responsible person at their request.

Where ground conditions are submerged granular deposits of silt or sand, an assessment of the effect of vibration on settlement and liquefaction at the pipeline shall be made.

Expert advice may need to be sought which can be arranged through Wales & West Utilities.

9.5 Blasting

No blasting will be allowed within 250 metres of a pipeline without an assessment of the vibration levels at the pipeline. The peak particle velocity at the pipeline must be limited to a maximum level of 75 mm/sec. In any event, the ground vibration must be monitored by the contractor and the results made available to the Wales & West Utilities responsible person at their request.

Where ground conditions are of submerged granular deposits of silt or sand, an assessment of the effect of vibration on settlement and liquefaction at the pipeline shall be made.

Expert advice may need to be sought which can be arranged through Wales & West Utilities.

9.6 Surface mineral extraction

An assessment must be carried out on the effect of surface mineral extraction activity within 100 metres of a pipeline. Consideration should also be given to extraction around groundbeds and other pipeline associated plant and equipment.

Where the mineral extraction extends up to the pipeline easement, a stable slope angle and stand-off distance between the pipeline and slope crest should be determined by Wales & West Utilities. The easement strip should be clearly marked by a suitable permanent boundary such as a post and wire fence, and, where appropriate, slope indicator markers shall be erected to facilitate the verification of the recommended slope angle as the slope is formed, by the contractor. The pipeline easement and slope needs to be inspected periodically to identify any signs of developing instability. This may include any change of slope profile including bulging, the development of tension cracks on the slope or easement, or any changes in drainage around the slope. The results of each inspection should be recorded.

Where surface mineral extraction activities are planned within 100 metres of the pipeline but do not extend up to the pipeline easement boundary, an assessment by Wales & West Utilities should be made on whether the planned activity could promote instability in the vicinity of the pipeline. This may occur where the pipeline is routed across a natural slope, or the excavation is deep. A significant cause of this problem is where the groundwater profile is affected by changes in drainage or the development of lagoons.

Where the extraction technique involves explosives, the provisions of section 9.5 apply.

9.7 Deep mining

Pipelines routed within 1 km of active deep mining may be affected by subsidence resulting from mineral extraction. The determination of protective or remedial measures will normally require expert assistance, which can be arranged through Wales & West Utilities.

9.8 Landfilling

The creation of slopes outside of the pipeline easements may promote instability within the vicinity of the pipeline. An assessment should therefore be carried out, by Wales & West Utilities, on the effect of any landfilling activity within 100 metres of a pipeline. The assessment is particularly important if landfilling operations are taking place on a slope in which the pipeline is routed.

9.9 Pressure testing

Hydraulic pressure testing will not be permitted within 8 metres of the pipeline unless suitable precautions have been taken against the effects of a burst. These precautions should include limiting of the design factor to 0.3 for the third-party pipeline for a distance of 6 metres either side of the Wales & West Utilities pipeline, and the use of mill tested pipe or sleeving.

9.10 Seismic surveys

Wales & West Utilities must be advised of any seismic surveying work in the vicinity of a pipeline that will result in the Wales & West Utilities pipeline being subjected to peak particle velocities in excess of 50 mm/sec. In any event, the ground vibration near to the pipeline shall also be monitored by the contractor whilst the survey work is being carried out.

Where the peak particle velocity is predicted to exceed 50 mm/sec, the ground vibration should be monitored by the contractor and the results available to the Wales & West Utilities responsible person at their request.

9.11 Hot work

The Wales & West Utilities responsible person on site should supervise all welding, burning or other “hot work” that takes place within the easement.

9.12 Wind turbines

Wales & West Utilities must be advised of any planned development of wind turbines in the vicinity of an above 2 bar gas pipeline to ensure the development does not impact on the future safe operation of the pipeline. Industry guidance states that any wind turbine must be sited no closer than 1.5 times the proposed height of the turbine mast away from the nearest edge of the pipeline.

Consideration shall be given to the location of any battery energy storage system, cabling, earthing and/or substations, to ensure electrical interference is minimised, and future access to the pipeline is maintained.

Further guidance can be found in UKOPA Good Practice Guide 13 (UKOPA/GP/013) *Requirements for the Siting and Installation of Wind Turbines Installations in the Vicinity of Buried Pipelines*.

9.13 Solar farms






Wales & West Utilities must be advised at design stage of any planned development of solar farms in the vicinity of an above 2 bar gas pipeline. Early engagement with Wales & West Utilities is required to review the siting of any equipment, including battery energy storage system, cabling, earthing and/or substations, to ensure electrical interference is minimised, and future access to the pipeline is maintained.

Further guidance can be found in UKOPA Good Practice Guide 14 (UKOPA/GP/014) *Requirements for Siting and Installation of Solar Photovoltaic (PV) Installations in the Vicinity of Buried Pipelines*.

9.14 Tree planting

Consideration shall be given to the planting of any new trees in the vicinity of Wales & West Utilities pipelines to avoid the potential damage, or restricted access, caused by the root system. Wales & West Utilities approval must be sought for any trees situated within the pipeline easement, and Wales & West Utilities reserves the right to remove any trees within the easement.

Where necessary, only shallow rooting hedge plants shall be planted directly above a Wales & West Utilities pipeline to provide screening or indicate field boundaries. Dense mass planting must not be carried out within 10 metres of Wales & West Utilities pipelines.

	<p>Large-growing species: Poplars and willows</p>	10 metres	DISTANCE FROM PIPELINE																				
	<p>Large conifers and deciduous forest trees:</p> <table border="0"> <tr> <td>Scots pine</td> <td>Black pine</td> <td>Cedar</td> <td>Larch</td> </tr> <tr> <td>Ash</td> <td>Beech</td> <td>Sycamore</td> <td>Horse-chestnut</td> </tr> <tr> <td>Sweet-chestnut</td> <td>London plane</td> <td>Hornbeam</td> <td>Lime alder</td> </tr> <tr> <td>Elm</td> <td>Oak</td> <td>Apple</td> <td>Pear</td> </tr> <tr> <td>Plum</td> <td>Lime</td> <td>Cherry</td> <td></td> </tr> </table>	Scots pine		Black pine	Cedar	Larch	Ash	Beech	Sycamore	Horse-chestnut	Sweet-chestnut	London plane	Hornbeam	Lime alder	Elm	Oak	Apple	Pear	Plum	Lime	Cherry		6 metres
Scots pine	Black pine	Cedar		Larch																			
Ash	Beech	Sycamore		Horse-chestnut																			
Sweet-chestnut	London plane	Hornbeam		Lime alder																			
Elm	Oak	Apple	Pear																				
Plum	Lime	Cherry																					
	<p>Dwarf stock fruit trees:</p> <table border="0"> <tr> <td>Amenity trees</td> <td>Field maple</td> <td>Wild cherry</td> <td>Crab apple</td> </tr> <tr> <td></td> <td>Cobnut</td> <td>Birch</td> <td>Elder</td> </tr> <tr> <td>Ornamental trees</td> <td>Mountain ash</td> <td>Whitebeam</td> <td>Cockspur thorn</td> </tr> <tr> <td></td> <td>False acacia</td> <td>Lawson cypress</td> <td></td> </tr> </table>	Amenity trees	Field maple	Wild cherry	Crab apple		Cobnut	Birch	Elder	Ornamental trees	Mountain ash	Whitebeam	Cockspur thorn		False acacia	Lawson cypress		3 metres					
Amenity trees	Field maple	Wild cherry	Crab apple																				
	Cobnut	Birch	Elder																				
Ornamental trees	Mountain ash	Whitebeam	Cockspur thorn																				
	False acacia	Lawson cypress																					
	<p>Shrub planting and fruit bushes:</p> <table border="0"> <tr> <td>Holly</td> <td>Laurel</td> <td>Privet</td> <td>Rhododendron</td> </tr> <tr> <td>Christmas trees</td> <td>Dogwood</td> <td>Gooseberries</td> <td>Raspberries</td> </tr> <tr> <td>Currants</td> <td>Roses</td> <td>Loganberries</td> <td>Spindle</td> </tr> </table>	Holly	Laurel	Privet	Rhododendron	Christmas trees	Dogwood	Gooseberries	Raspberries	Currants	Roses	Loganberries	Spindle	1.5 metres									
Holly	Laurel	Privet	Rhododendron																				
Christmas trees	Dogwood	Gooseberries	Raspberries																				
Currants	Roses	Loganberries	Spindle																				
	<p>Hedge plants and ground covers: Hedge plants only where necessary over the pipeline, road and field crossings, etc.</p> <table border="0"> <tr> <td>Ground cover</td> <td>Hawthorn</td> <td>Snowberry</td> <td>Blackthorn</td> </tr> <tr> <td></td> <td>Berberis</td> <td>Heathers</td> <td>Cotoneaster</td> </tr> </table>	Ground cover	Hawthorn	Snowberry	Blackthorn		Berberis	Heathers	Cotoneaster														
Ground cover	Hawthorn	Snowberry	Blackthorn																				
	Berberis	Heathers	Cotoneaster																				

10 | Backfilling

Third parties should provide Wales & West Utilities with seven days' notice, or shorter notice only if agreed with Wales & West Utilities, of the intent to backfill over, under or alongside the pipeline. This requirement should also apply to any backfilling operations alongside the pipeline within 3 metres of the pipeline. Any damage to the pipeline or coating must be reported to the Wales & West Utilities responsible person in order that damage can be assessed and repairs can be carried out.

Minor damage to pipe coating and damage to CP cabling will normally be repaired by Wales & West Utilities free of charge.

No backfilling should be undertaken without Wales & West Utilities agreement to proceed. When backfilling, the pipeline should be surrounded by at least 150 mm of soft fill (i.e. stone dust) containing no stones, bricks, lumps of concrete, etc. The Wales & West Utilities responsible person will stipulate the necessary consolidation requirements.

If the pipeline has been backfilled without the knowledge of the Wales & West Utilities responsible person, then they will require the material to be re-excavated in order to enable the condition of the pipeline coating to be confirmed.



11 Action in the case of damage to the pipeline

If the Wales & West Utilities pipeline, coating or any ancillary equipment such as cathodic protection cabling is damaged, even slightly, and even if no gas leak has occurred, then the following precautions must be taken immediately:

- Shut down all plant and machinery and extinguish any potential sources of ignition.
- Evacuate all personnel from the vicinity of the pipeline.
- Notify Wales & West Utilities using the free 24-hour emergency telephone number 0800 111 999*.
- Notify the Wales & West Utilities responsible person or their office immediately using the contact telephone number provided.
- Ensure no one approaches the pipeline.
- **Do Not Try To Stop Any Leak.**

* All calls are recorded and may be monitored



12 References

NRSWA	New Roads and Street Works Act 1991.
HS(G)47	Avoiding Danger from Underground Services.
IGEM/SR/18	Safe Working Practices to Ensure the Integrity of Gas Pipelines and Associated Installations.
T/PM/P/18	Working on Pipelines Containing Defective Girth Welds or Girth Welds of Unknown Quality.
UKOPA/GP/013	Requirements for the Siting and Installation of Wind Turbines Installations in the Vicinity of Buried Pipelines.
UKOPA/GP/014	Requirements for the Siting and Installation of Solar Photovoltaic (PV) Installations in the Vicinity of Buried Pipelines.

13 Glossary of terms

Contractor: The person, firm or company with whom Wales & West Utilities enters into a contract to which this specification applies, including the contractor's personal representatives, successors and permitted assigns.

Easement: Easements are negotiated legal entitlements between Wales & West Utilities and landowner and allow Wales & West Utilities to lay, operate and maintain pipelines within the easement strip. Easement strips may vary in width depending on the diameter and pressure of the pipeline. Consult Wales & West Utilities for details of the extent of the easement strip where work is intended.

Liquefaction: Liquefaction is a phenomenon in which the strength and stiffness of the soil is reduced by earthquake shaking or other rapid loading. Liquefaction occurs in saturated soils, that is soils in which the space between individual particles is completely filled with water. When liquefaction occurs, the strength of the soil decreases and the ability of the soil to support pipelines or other components is reduced.

Pearson survey: A survey used for locating coating defects on buried pipeline services.

DCVG survey: Direct Current Voltage Gradient, a survey for locating and grading coating defects on buried pipeline services.

Promoter of new works: The person or persons, firm, company or authority for whom new services, structures or other works in the vicinity of existing Wales & West Utilities pipelines and associated installations operating above 7 bar gauge are being undertaken.

Wales & West Utilities responsible person: The person or persons appointed by Wales & West Utilities with the competencies required to act as the Wales & West Utilities representative for the purpose of managing the particular activity.

Appendix A

Site document control form sample

Emergency Telephone No. **0800 111 999***
 Plant Protection Telephone No. **02920 278912**

Site document control form

Activity reference:

Activity location:

Activity grid coordinates:

Site Manager:

(name and telephone number)

Wales & West Utilities contact:

(name and telephone number)

The following documents were issued to:

(individual's name)

of

.....
(company name and address)

by

.....
(Wales & West Utilities representative)

on

.....
(date):

Documents:

(List of documents)

Signed:

(by the recipient)

Date of signature:

* All calls are recorded and may be monitored

Site document control form

Emergency Telephone No. **0800 111 999***
 Plant Protection Telephone No. **02920 278912**

Site document control form

Activity reference:

Activity location:

Site Manager:

(name and telephone number)

Wales & West Utilities contact:

(name and telephone number)

The following documents were issued to

(individual's name)

of

(company name and address)

by

(Wales & West Utilities representative)

on

(date):

Documents:

Signed:

Date of signature:

* All calls are recorded and may be monitored

If you have any additional queries about this specification please contact our Plant Protection Team via email Dig@wwutilities.co.uk



wwutilities.co.uk



[@WWUtilities](https://www.instagram.com/WWUtilities)



[wwutilities](https://www.facebook.com/wwutilities)



[@WWUtilities](https://www.x.com/WWUtilities)