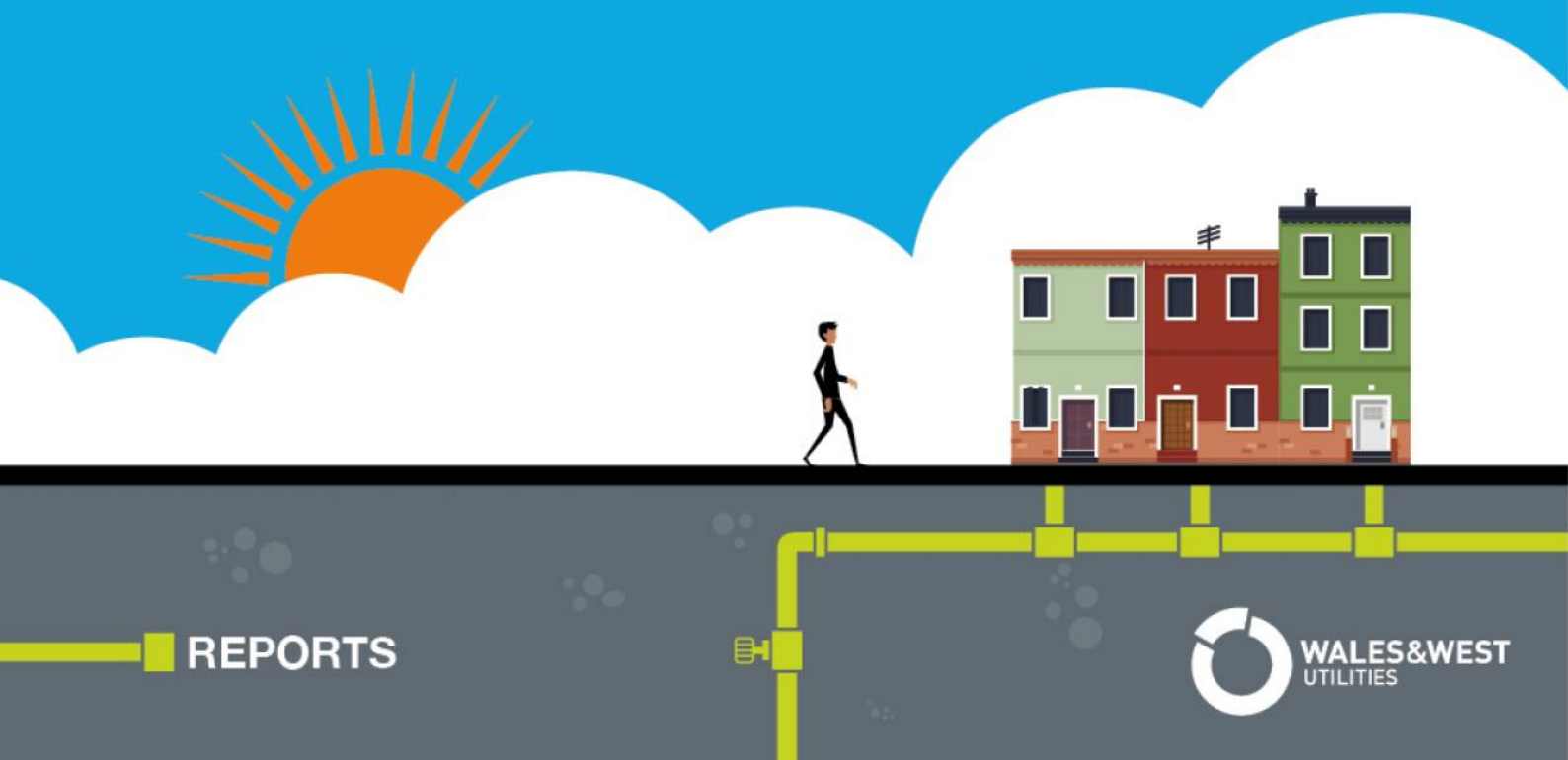


# Wales & West Utilities Ltd LDZ Shrinkage and Leakage Report

1st April 2018 – 31st March 2019 as required under Licence  
Special Condition 1F.14

June 2019



REPORTS



WALES&WEST  
UTILITIES

## Table of Contents

Table of Contents	2
1. Executive Summary	3
2. Actual Shrinkage and Leakage Volumes	3

## 1. Executive Summary

This is a report, as required under Licence condition 1F.14 setting out the actual leakage volume (LV<sub>t,i</sub>) and actual shrinkage volume (ASV<sub>t</sub>) as calculated in accordance with the Shrinkage and Leakage Model for each Local Distribution Zone (LDZ) within Wales & West Utilities.

The Shrinkage and Leakage Model used is the latest approved version by Ofgem. The current version being v1.4 which was approved on 16th September 2014.

Please note the values contained within this document have been rounded to an appropriate level of accuracy. This may cause immaterial discrepancies between the totals presented within this document and the summation of their constituent parts, however each individual figure is correct in its rounded form.

## 2. Actual Shrinkage and Leakage Volumes

Table 1: Leakage and Shrinkage per LDZ (GWh)

LDZ	Actual Total Leakage, LV <sub>t,i</sub> (GWh)	Actual Total Shrinkage, ASV <sub>t</sub> (GWh)
Wales North	42.77	44.77
Wales South	92.60	100.95
South West	196.72	205.75
<b>Network Total</b>	<b>332.08</b>	<b>351.47</b>

Table 2: Low Pressure Leakage

LDZ	Low Pressure				
	Metallic Mains Length (km)	Average System Pressure – All PE networks excluded (mbar)	MEG Saturation	No. Customers	Leakage (GWh)
Wales North	613	29.89	-	253,051	18.60
Wales South	1,720	30.80	-	828,935	60.21
South West	4,461	29.01	-	1,458,147	147.62
<b>Network Total</b>	<b>6,794</b>	<b>29.65<sup>1</sup></b>	-	<b>2,540,134</b>	<b>226.42</b>

<sup>1</sup>Weighted average taken from the Leakage model v1.4

Table 3: Medium Pressure Leakage

Medium Pressure		
	Metallic Mains Length (km)	Leakage (GWh)
Wales North	83.54	3.44
Wales South	266.83	9.68
South West	767.60	18.75
<b>Network Total</b>	<b>1,117.97</b>	<b>31.87</b>

Table 4: Above Ground Installation and Interference

	AGI				Interference	
	No. Sites	Leakage (GWh)	Venting (GWh)	AGI Total (GWh)	No. of Incidents	Leakage (GWh)
Wales North	629	9.28	11.32	20.59	228	0.13
Wales South	1,081	12.48	10.03	22.51	291	0.21
South West	15,868	19.82	9.93	29.75	1,025	0.60
<b>Network Total</b>	<b>17,578</b>	<b>41.58</b>	<b>31.28</b>	<b>72.85</b>	<b>1,544</b>	<b>0.94</b>

Table 5: Theft of Gas

LDZ	Theft of Gas (GWh)
Wales North	1.28
Wales South	5.33
South West	5.77
<b>Network Total</b>	<b>12.39</b>

Table 6: Own Use Gas

LDZ	Own Use Gas (GWh)
Wales North	0.72
Wales South	3.01
South West	3.26
<b>Network Total</b>	<b>7.00</b>