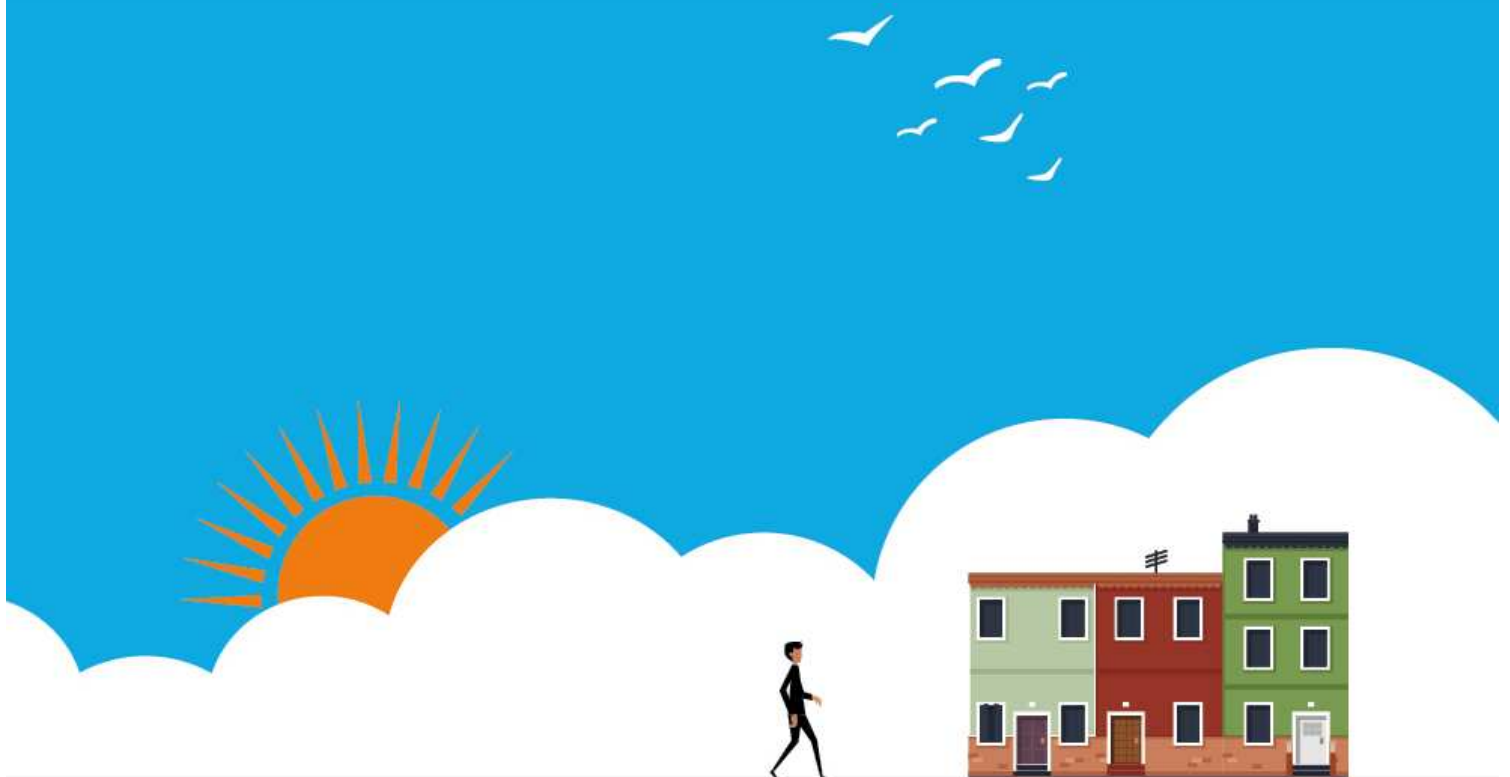


Metering Charges

Effective from 1st April 2019 until superseded
Published 25th March 2019



REPORTS



Foreword.....	3
1. Introduction.....	4
2. Charges from 1 st April 2019.....	5
3. Metering Charging Methodology.....	7

Foreword

This booklet sets out the metering charges that Wales & West Utilities Limited (WWU) will apply for services provided under the Uniform Network Code from 1st April 2019. WWU publishes this statement as required by WWU Standard Special licence Condition D18 in accordance with the timescales in the Uniform Network Code Transportation Principle Document Section B 1.8.2 (b).

Some of WWU's metering charges are regulated by a price control set by Ofgem, the gas industry regulator. Ofgem has set tariff caps for four key metering and meter reading services. WWU's charges for these services must not exceed the tariff caps. The tariff caps change each year by inflation in accordance with Special Condition 4D of WWU's licence.

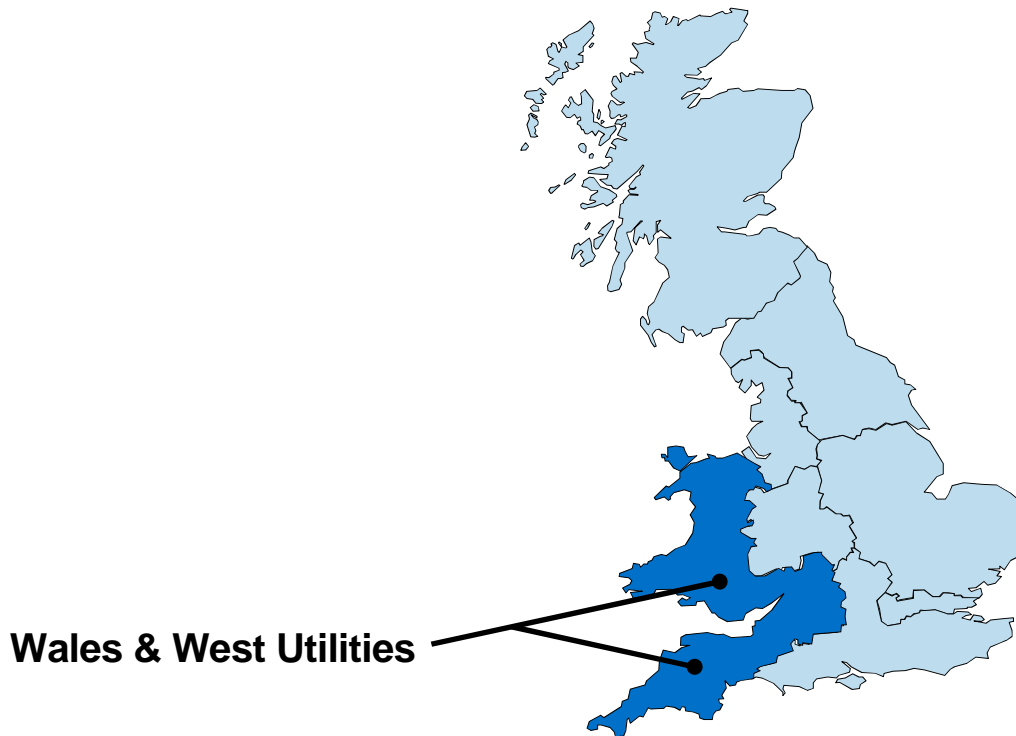
Charges will apply in respect of meter reading assets owned by WWU in its gas distribution network. On 1st April 2014 WWU appointed National Grid Gas as backstop provider of last resort domestic meters and on 1st March 2015 sold its existing domestic and non-domestic meters to National Grid Gas. In consequence WWU no longer provides regulated metering services to Suppliers.

WWU would welcome your views on any aspect of its metering service, its charges or the contents of this statement. If you have any comments please telephone **Richard Pomroy** on **029 2027 8552** or e-mail them to enquiries@wwutilities.co.uk marked for the attention of Richard Pomroy. The latest version of this publication is available from our website at www.wwutilities.co.uk.

All charges shown are exclusive of VAT.

1. Introduction

WWU provides gas transportation and daily meter reading services throughout its area of operation (shown below):



WWU is an Approved Meter Installer (AMI) and provides a range of meter installation and maintenance services for Meter Asset Managers and customers. For further details of these services please contact **Richard Pomroy** on **029 2027 8552** or e-mail to enquiries@wwutilities.co.uk marked for the attention of Richard Pomroy.

This publication sets out WWU's charges from 1st April 2019 for its metering reading activities provided by its Transportation business under the Uniform Network Code.

2. Charges from 1st April 2019

2.1 Introduction

This section sets out the charges for metering activities carried out under the Uniform Network Code. This document does not override nor vary any of the statutory, licence or Uniform Network Code or other contractual obligations upon WWU.

2.1.1 Dataloggers

Dataloggers (Daily Metered Sites – asset charge)

	Pence a day	£ a year
Total	353.5096	1290.31
Comprising		
Provision	327.0164	1193.61
Installation	14.1644	51.70
Maintenance	12.3288	45.00

Datalogger charges apply to all dataloggers at daily metered supply points, as defined by the Uniform Network Code. These charges have been revised following the replacement of all WWU's Daily Metered (DM) dataloggers and implementation of system changes to reflect the change in the Gas Day. They also include costs for changes implemented by our service provider required by Project Nexus.

Note that this asset rental charge is in addition to the Daily Metered Sites read charge that is listed below.

Dataloggers (Daily Metered Sites - read charge)

	Pence a day	£ a year
Total	159.3425	581.60

2.1.2 Prime and sub-deduct read charges

The provision of meter reading services to shippers for meters at Sub-Deduct Arrangements as defined in the Uniform Network Code (UNC) Transportation Principal Document (TPD) Section G1.8. Invoice arrangements for such reads are managed through Xoserve on behalf of Gas Transporters in accordance with UNC TPD Section S arrangements.

Read type	Each read
(N05) Monthly Read	£7.37
(N06) Domestic Non Monthly Read	£3.37
(N07) I & C Non Monthly Read	£5.79
(N08) I & C Opening Reads	£8.63

2.1.3 Must Read charges

Charges for the provision of meter reading services to Shippers where the Shipper has failed to obtain a read as defined in the Uniform Network Code (UNC) Transportation Principal Document (TPD) Section M3.6. Invoice arrangements for such reads are managed through Xoserve on behalf of Gas Transporters in accordance with UNC TPD Section S arrangements.

Read type	Each read
(W07) Must Read	£62.77

3. Metering Charging Methodology

3.1 Introduction

In addition to publishing its charges, WWU's Gas Transporter Licence requires it to publish an explanation of the methods by which, and the principles on which, its charges are calculated.

Ofgem has set tariff caps for four key services. WWU's charges for these services must not exceed the tariff caps, which are changed each year by inflation calculated in accordance with the methodology set out in WWU's GT licence. As WWU no longer owns domestic meters only the DM Daily Meter Read charge is relevant.

The DM Asset Charge is set to recover the costs WWU expects to incur in providing the DM datalogger over its life. The charge includes recovery of costs incurred by WWU as a result of our Daily Metering Service Provider (DMSP) making system changes to accommodate the change in the Gas Day on 1st October 2015 and costs to accommodate changes required by Project Nexus implemented on 1st June 2017. Charges have been set to recover these costs over the remaining term of our contract with our DMSP.

3.2 Metering Tariff Caps from 1st April 2019

Service	Tariff Cap
DM Daily Meter Reading	£581.61

The tariff caps that are not relevant to WWU are not shown