

# New supply to a single domestic or commercial property application form

We'll be happy to give you an accurate quotation – just fill in the sections below and send us the form.

## Any questions?

Opening hours: **8am to 8pm** weekdays **9am to 2pm** Saturdays

Give us a call on **0800 912 2999**.

Or you can apply for a quote online at: [www.wwutilities.co.uk](http://www.wwutilities.co.uk)

We're here to help.



## 1. Your details (these are the details we'll use to contact you)

**SMELL GAS? Please call the gas emergency line: 0800 111 999**

Name:  Daytime phone:   
Company name:  Mobile number:   
Email:

If you give us an email address, we'll send you your quote direct. We'll also post a printed copy to the address you fill in above.

Full address:

Tick the ones below that apply to you.

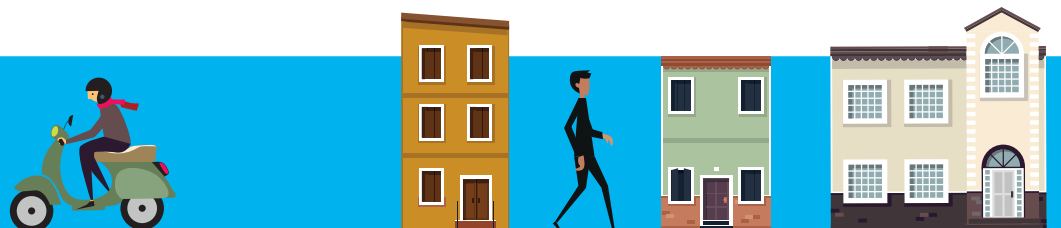
- Owner/occupier  Local authority or housing association  
 Gas supplier  Charity  
 Housebuilder or developer  Consultancy or agent

Postcode:

Other (please give more details)

Would you prefer your quotation in Welsh, in large print or in Braille?

Welsh  Large print  Braille



# Sleep tight

At Wales & West Utilities we are busy raising awareness of gas-safety issues and helping you, our customer, sleep soundly at night.



## 2. The site details (these are the details of the property we'll be working at)

Full address:

Is the property:

a house?  a flat?  a commercial building?

If it's a flat or maisonette, which floor is it on?

Is the property listed or within a protected area?

Yes  No

Postcode:

Contact name:

Is the property: a new build?  an existing property?

Contact number:

If 'new' please attach a site plan of the surrounding area. Tick if you have attached this.

## 3. Where would you like your new meter?

Write a brief description and draw a sketch – or attach photos when you send this form back to us.

## 4. How much gas will you need?

We will apply default gas use (hourly 60KW, yearly 16500KW) to domestic properties unless you tell us otherwise. For help with your gas use, please contact a Gas Safe engineer by visiting [www.gassaferegister.co.uk](http://www.gassaferegister.co.uk).

Please give your hourly gas use:

Yearly gas use:

Are you planning to have a smart meter installed? Yes  No

If you have answered 'Yes', we may have to visit you before giving you your quotation.

# Zoom!

## There in a flash

We work hard to make sure our response time to a gas emergency is just a matter of minutes.



Which meter box would you like?

Built-in



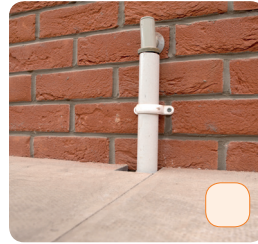
Wall-mounted



Semi-concealed



Internal



Kiosk



The semi-concealed meter box does not allow for smart gas meters. If you will be having smart meters installed, you will need to provide your own gas-meter housing. Only select a kiosk if you need a gas supply over 65KW/hr.

Please tick this box if you will be supplying the meter box or kiosk.

Are there any obstacles along the proposed route? Yes  No

(Things like a high wall, ramp, step, stream, change of levels, parking or access to the home can cause an obstacle.)  
If Yes, please give details below.

Will the work involve crossing private land you do not own? If so, we'll need written permission from the land owner. Yes  No   
If Yes, please give us as much information as you can on the land and the land owner below.

Does anyone living at the property have any communication, access, safety or other specific needs that we should be aware of?

Yes  No

If Yes, please give details below (for example, deaf, blind or partially sighted or has mobility issues.)

# Solid as a rock

It is important to us that you trust us to deliver reliable gas supplies year in year out.

Is there anything else you think we should know?

We work with partner organisations approved by Ofgem, our regulator, to provide funding towards the costs of connecting to gas to eligible households. Our partner organisations may contact you on our behalf to discuss potential funding. We will give you information with our quotation on how to contact them. Information is also available on our website <http://wwutilities.co.uk/services/gas-connections/warm-home-assistance/>. Please also see our privacy statement on how we protect your data.

## 5. Your signature please

Don't forget to sign and date below! (Handy tip – for new gas supplies, you'll need to choose a gas supplier – they will then fit your new gas meter)

Name:

Signature:

Date:

### Wales & West Utilities

Wales & West House  
Spoofer Close  
Celtic Springs  
Coedkernew  
Newport NP10 8FZ

Registered in England and Wales number. 5046791

 [www.wwutilities.co.uk](http://www.wwutilities.co.uk)

 [facebook.com/wwutilities](https://facebook.com/wwutilities)

 @WWUtilities

Crystal  
Mark  
22124  
Clarity approved by  
Plain English Campaign

